

Burma Children  
*Medical Fund*



**Health for All**

# EARTHQUAKE RELIEF SUPPORT REPORT

2025



# HFA - BCMF

## EARTHQUAKE RELIEF REPORT 2025

### Introduction

In March 2025, a 7.7-magnitude earthquake struck near Sagaing in central Burma, causing extensive damage across the Sagaing Division, Mandalay Division, and Shan State. According to UNU INWEH report, the disaster resulted in an estimated **3,600–5,350 deaths**, over **11,000 injuries**, and the destruction or damage of around **157,000 buildings**, leaving nearly **200,000 people displaced**. Relief efforts were severely hampered by military-imposed restrictions, which disproportionately affected already vulnerable communities.



*Earthquake destruction in Mandalay*

In response, the **Health for All Foundation – Burma Children Medical Fund (HFA-BCMF)** coordinated and funded emergency relief efforts through a network of regional partners.



*Damage houses in Sagaing*









*Inle Lake - destroyed buildings*

### Overview of Emergency Earthquake Relief Response

HFA-BCMF provided support in six key areas of intervention:

1. Medical Aid
2. Temporary Shelter & Living Equipment/Non-Food Item (NFI) Support
3. Infrastructure/House Rebuilding & Repair
4. Water, Sanitation & Hygiene (WASH)
5. Food Relief
6. Stationery Support

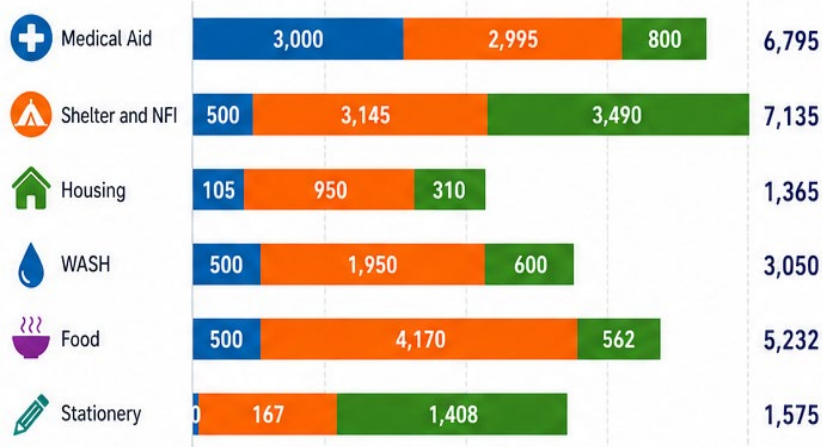
## Statistics: Beneficiary Numbers, Support Types, and Locations

SUPPORT TYPE	BENEFICIARIES				
	Inle Lake, Shan	Sagaing Division	Mandalay Division	TOTAL	% OF TOTAL
 Medical Aid	3,000	2,995	800	6,795	27.02%
 Shelter and NFI	500	3,145	3,490	7,135	28.37%
 Housing	105	950	310	1,365	5.43%
 WASH	500	1,950	600	3,050	12.13%
 Food	500	4,170	562	5,232	20.80%
 Stationery	0	167	1,408	1,575	6.26%
<b>TOTAL</b>	<b>4,605</b>	<b>13,377</b>	<b>7,170</b>	<b>25,152</b>	<b>100.00%</b>

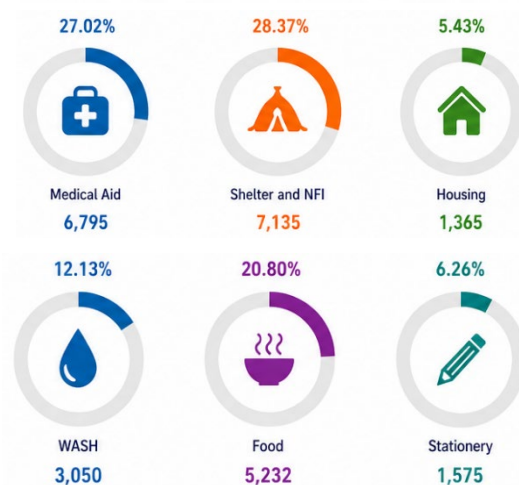
TOTAL BENEFICIARIES  
**25,152**



BENEFICIARY NUMBERS BY SUPPORT TYPE AND REGION



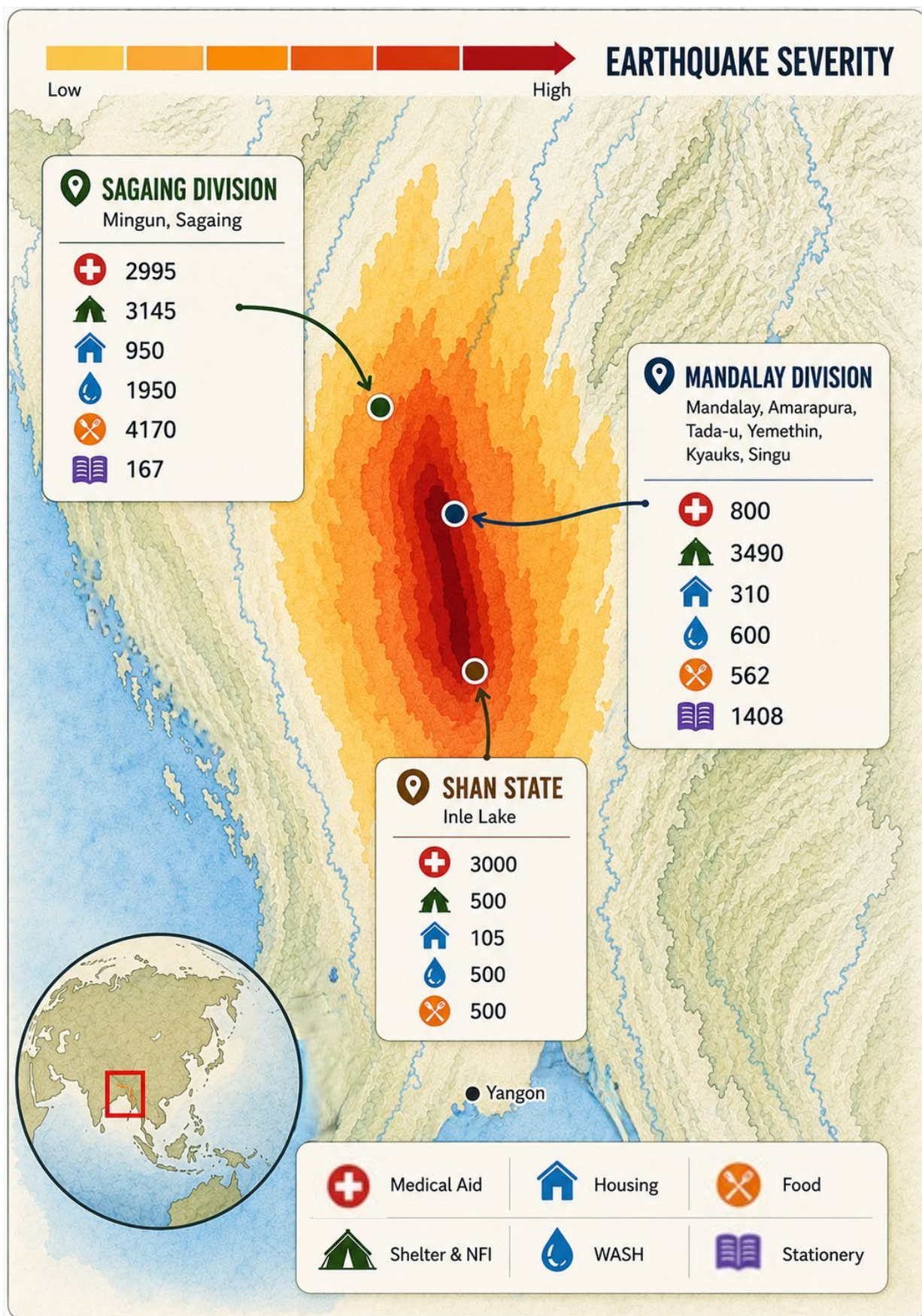
BENEFICIARIES BY SUPPORT TYPE (PERCENTAGE)



### Key Takeaways

- Shelter and NFI support reached the largest number of beneficiaries (**7,135 people, 28.4%**), highlighting the substantial need for emergency shelter materials and essential household items.
- Medical assistance was the second largest area of support, benefiting **6,795 people (27.0%)**, demonstrating significant health needs among affected communities.
- Sagaing Division recorded the highest overall beneficiary reach, supporting **13,377 people (53.2% of all beneficiaries)**. This reflects the extensive humanitarian needs and scale of interventions in the area.

Map: Support Types, Beneficiaries Numbers, and Locations (Divisions and townships)



**TOTAL BENEFICIARIES 25,152** (Note: Beneficiary groups received multiple supports according to their respective needs).

## Support Activities

### 1. Medical Aid

After the earthquake, damaged healthcare facilities left many without medical care, leading to outbreaks of diarrhea, respiratory infections, and skin diseases, especially among children and seniors.

#### Activities:

- Four **mobile clinics** were funded to buy medicine and equipment, operating in Shan State, Mandalay, and Sagaing Division. Volunteer medical teams served remote villages and displacement camps.
- Medical teams provided **basic health check-ups, distributed medicines** (supported by HFA-BCMF), and held **health education sessions** on common illnesses.
- In Mingun township, Sagaing, local volunteers provided children with medicine for fevers, coughs, and other common ailments.



*Medical teams providing healthcare in Mandalay, Inle and Sagaing*

## 2. Temporary shelter and Living Equipment Support

As monsoon rain approached, displaced families faced increased risks from illness and a lack of shelter. Many were forced to sleep outdoors in wet conditions, heightening vulnerability, particularly for children and the elderly.

### Activities:

- Distributed emergency **shelter materials** (tarpaulins, bamboo, bamboo sheets, zinc roofing, rain covers, tents).
- Provided living equipment, including **mosquito nets, anti-mosquito coils, Fabric rolls, clothes, and personal hygiene items, including toothpaste, toothbrush, underwear, soap, and detergent robes for monks, sleeping mats, blankets, pillows, and solar light with panels and solar lamps** for safety and comfort.
- Provide equipment for infants, including **baby mosquito nets, wrapping clothes, and baby clothes** in Yamethin Township, Mandalay Division



*Temporary shelters built in Mandalay*



*Volunteer teams distributing shelter materials, NFI and food*

### 3. House and School Repairs and Rebuilds

Following the earthquake, numerous families were left without shelter, prompting immediate action to rebuild or repair homes and vital community infrastructure.

#### Activities:

- Distributed **zinc sheets, nail boxes, and funded handyman services to repair roofs and structural damage for 21 households** in Inle Lake, Shan State.
- Provided **bamboo sheets and support poles to 20 households** in Kyaukse Township, Mandalay Division, facilitating the repair and reinforcement of their residences.
- Supported **reconstruction of six houses** in Amarapura Township, Mandalay, for families whose homes were completely destroyed by the disaster.
- Established **two school buildings equipped with bomb shelters** in Singu Township, Mandalay, ensuring uninterrupted education and safety for children in areas affected by both the earthquake and ongoing armed conflict.



*Inle, Sagaing - houses and school repair and rebuilds*

#### 4. Water, Sanitation, and Hygiene (WASH)

Following the earthquake and ongoing armed conflict, communities in Mandalay, Shan State, and Sagaing had difficulties in accessing clean water and maintaining hygiene.

##### Activities:



*A water system with a well built in Sagaing*

- Delivered **2,100 drinking water bottles (one-liter bottles)** in Mandalay, **60 bottles** in Tada U Township, Mandalay Division, and **1800 bottles** in Inle Lake, Shan State
- Distributed **ten small water containers (20 litre containers)** to Min Kun, Sagaing Division
- Supplied **ten boxes of masks** in Sagaing for community health and hygiene
- Provided a **water system, including a water well, water containers, water pumps, pipes, and water filters for 350 families** in Sagaing Division



*Delivering clean drinking water*



- Delivered **infant hygiene support (161 sets of bars of baby soap and baby powder)** in Yamethin, Mandalay
- Distributed **990 menstrual hygiene kits, including underwear, menstrual pads, soap and detergent** to dormitory students, women, nuns, and girls in Mandalay, Kyaukse, Min Kun, and Sagaing Townships.



*Providing menstrual hygiene kits to nuns*

## 5. Food Relief

Following the earthquake, immediate food support became critical for affected communities, many of whom lost access to basic resources. Emergency food distribution was organized across several regions, to ensure families had access to essential nutrition during the initial days of recovery.

### Activities

- Provided **freshly prepared meals (three meals a day for two days)** to villagers in Tada U, Mandalay, three days after the earthquake.
- Distributed **food staples—including canned fish, rice bags, cooking oil, bean bags, meat bags, noodle packs, eggs, and tea leaf packs**—to affected families in Inle Lake, Shan State; Sagaing and Mingun Townships, Sagaing Division; and Mandalay Township, Mandalay Division.



*Food distribution and meal provision*

## 6. Stationery Support

To improve educational opportunities and the well-being of students and teachers, stationery kits were delivered by our partners in Mandalay and Sagaing.

### Activity

- A total of **2,040 books, 486 pencils, 66 school bags, 990 pens, and 240 rulers** were provided to one local middle school in Mandalay.
- Stationery kits were purchased locally and distributed to **1146 students** from **five schools** in Singu township, and **240 students** from Orphanage Dhamma School, Kyaukse, Mandalay Division
- Same stationery kits were also supported to Taung Kone High School in Sagaing Division for **167 students**.



*Stationery support to schools affected in Mandalay and Sagaing*

## Implementation Process

### Needs Assessment & Prioritization:

- All support was based on assessments submitted by partners. HFA - BCMF then prioritized requests based on urgency, access, and equity.

### Procurement & Distribution:

- Supplies were bought locally (Mandalay & Taunggyi) to reduce delays and to support local economies. Local partners and volunteers organized and managed delivery and documentation.

### Funding & Resource Allocation:

- Total relief expenditure exceeded **2 million THB**. Funds were distributed through **22 local partners, charity and volunteer groups** operating on the ground, including local medical teams.



*Partners delivering support*

## Acknowledgement of Donors

Donor contributions enabled timely aid delivery to vulnerable populations in Burma, providing emergency shelter, food, and ongoing assistance for housing, water, stationery, shelters, food, and equipment. These actions supported thousands of individuals and contributed to help stabilize affected areas. We acknowledge all our donors, including individual donors, for their continued support in helping BCMF supply resources to children and families across Burma. Donations have allowed the delivery of essential emergency services under challenging conditions.

As a result, communities in crisis have received help to improve safety, health, and stability.



## Challenges & Lessons Learned

- **Access Constraints:** The military junta restrictions and dangerous travel routes significantly delayed response efforts in Sagaing and Inle Lake.
- **Inflation & Supply Gaps:** Rising costs and material shortages slowed procurement and added to operational costs.
- **Local Network Strength:** Collaboration with youth groups, teachers, and healthcare providers ensured efficient local implementation and adaptability.

## Beneficiary Quotes

*Daw Tin, an earthquake survivor from Inle Lake, said, “When the earthquake happened, our roof and wall collapsed. For days, we sheltered under a makeshift tarp, soaked by rain and frightened every time the ground shook again. My grandson kept asking when we could go back inside, but we had no answer. We had no help. When the volunteer team arrived with zinc sheets, nails, and some cash for hiring a carpenter, I cried. For the first time since the earthquake, I felt like someone saw our suffering and came to help. We’ve now started rebuilding, and we know we’re not alone.”*



## Conclusion

Between April and July 2025, HFA-BCMF delivered life-saving aid to more than **25,152 people** in Sagaing, Mandalay Division, and Shan State. The program offered medical care, shelter, water and sanitation, food, education support, and hygiene materials, highlighting effective community-based crisis response. The program is ongoing and continues to expand in response to the changing needs of local populations. Local partnerships assisted in delivering rapid responses and sustainable solutions. Continued donor support will help to reach more communities, build capacity, and promote long-term stability.